

\$475,000 - 10722 106 Street, Edmonton

MLS® #E4458905

\$475,000

4 Bedroom, 2.00 Bathroom, 1,136 sqft
Single Family on 0.00 Acres

Central Mcdougall, Edmonton, AB

Investor Alert! This property combines the immediate benefit of a renovated, income generating home with the long-term value of a prime development lot in a rapidly changing area! 3 plus 1 bedroom, 1.5 storey, 2 bathrooms! Great "buy and hold" property for future development! The house to the south is also for sale, when combined would be a 100 X 150 lot. This lot is zoned RA8 "Medium Rise Apartment" for future development.

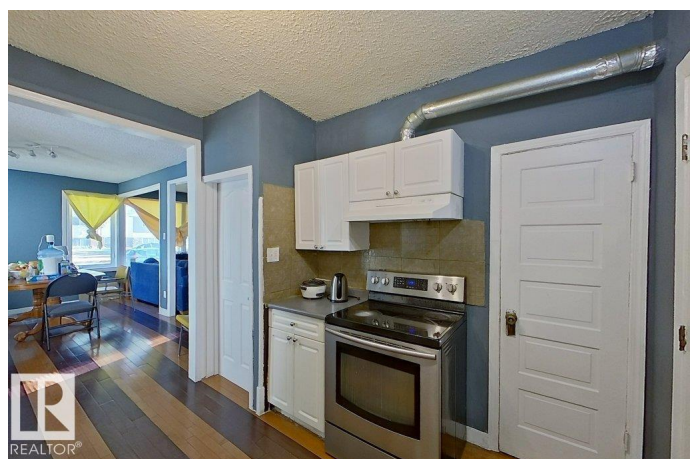
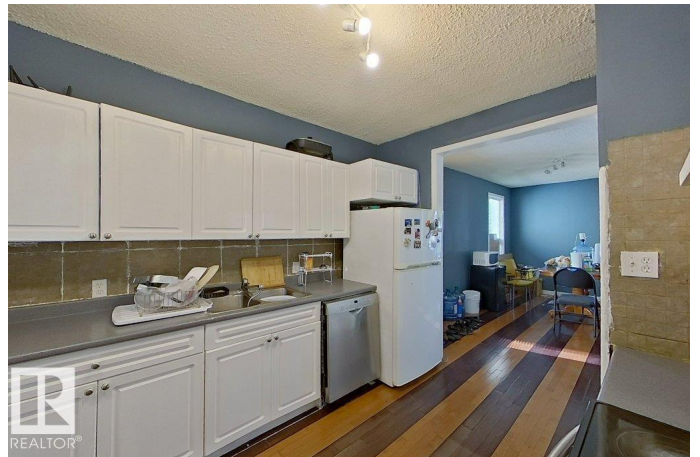
Built in 1916

Essential Information

MLS® #	E4458905
Price	\$475,000
Bedrooms	4
Bathrooms	2.00
Full Baths	2
Square Footage	1,136
Acres	0.00
Year Built	1916
Type	Single Family
Sub-Type	Detached Single Family
Style	Bungalow
Status	Active

Community Information

Address 10722 106 Street



Area	Edmonton
Subdivision	Central Mcdougall
City	Edmonton
County	ALBERTA
Province	AB
Postal Code	T5H 2X9

Amenities

Amenities	Parking-Visitor
Parking	Single Garage Detached

Interior

Appliances	Dryer, Stove-Countertop Electric, Washer, Refrigerators-Two
Heating	Forced Air-1, Natural Gas
Stories	2
Has Suite	Yes
Has Basement	Yes
Basement	Full, Finished

Exterior

Exterior	Wood, Vinyl
Exterior Features	Back Lane, Fenced, Landscaped, Public Transportation, Schools, Shopping Nearby
Roof	Asphalt Shingles
Construction	Wood, Vinyl
Foundation	Slab

Additional Information

Date Listed	September 22nd, 2025
Days on Market	59
Zoning	Zone 08

DATA IS DEEMED RELIABLE BUT IS NOT GUARANTEED ACCURATE BY THE REALTORS® ASSOCIATION OF EDMONTON. COPYRIGHT 2025 BY THE REALTORS® ASSOCIATION OF EDMONTON. ALL RIGHTS RESERVED. Trademarks are owned or controlled by the Canadian Real Estate Association (CREA) and identify real estate professionals who are members of CREA (REALTOR®, REALTORS®) and/or the quality of services they provide (MLS®, Multiple Listing Service®)

Listing information last updated on November 20th, 2025 at 4:02pm MST