

Courtesy Of David M Estephan Of RE/MAX Elite

\$219,900 - 231 Roseland Village, Edmonton

MLS® #E4462714

\$219,900

3 Bedroom, 1.50 Bathroom, 1,157 sqft
Condo / Townhouse on 0.00 Acres

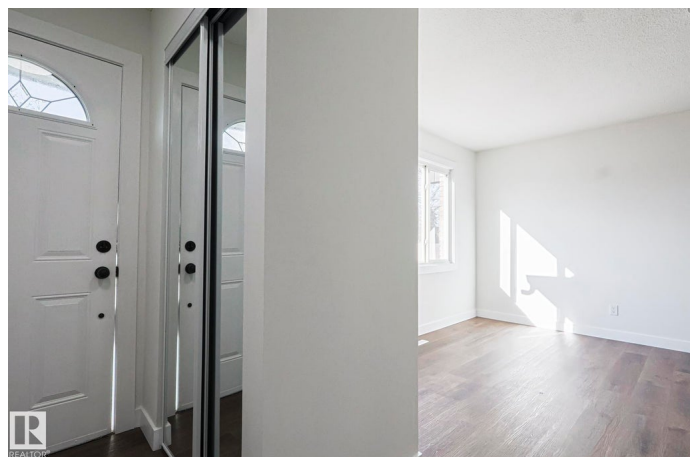
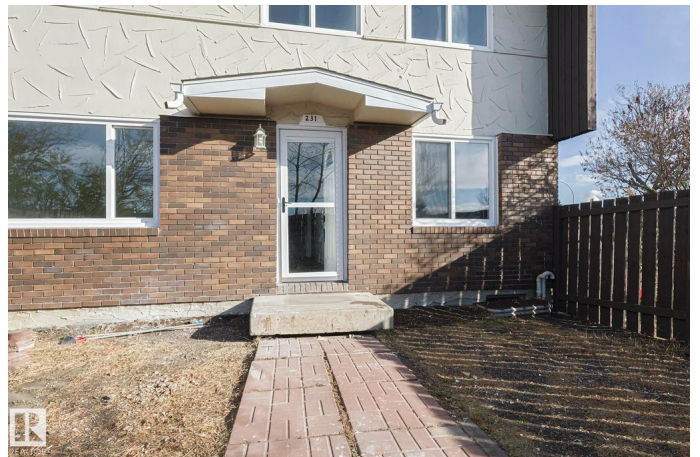
Northmount (Edmonton), Edmonton, AB

FIRST TIME BUYER OPPORTUNITY! This **FULLY RENOVATED 3-bedroom END UNIT** townhome in desirable Roseland Village is absolutely gorgeous! Perfectly located across from a park and greenspace, it offers both style and convenience. Featuring rich vinyl plank flooring, designer lighting, and high-end finishes throughout, this home impresses at every turn. The open-concept main floor showcases a stunning new kitchen with white cabinetry, elegant black subway tile backsplash, and quality stainless steel appliances. The bright living room has a large picture window filling the space with natural light, plus a stylish 2-piece bath on the main level. Upstairs you'll find 3 spacious bedrooms with mirrored closets and a beautifully updated bathroom with custom tile and modern fixtures. Enjoy a private fenced yard surrounded by mature trees, plus your own parking stall. The **LOW CONDO FEES** in a well-managed complex offers unbeatable value—just move in and enjoy!

Built in 1969

Essential Information

MLS® #	E4462714
Price	\$219,900
Bedrooms	3



Bathrooms	1.50
Full Baths	1
Half Baths	1
Square Footage	1,157
Acres	0.00
Year Built	1969
Type	Condo / Townhouse
Sub-Type	Townhouse
Style	2 Storey
Status	Active

Community Information

Address	231 Roseland Village
Area	Edmonton
Subdivision	Northmount (Edmonton)
City	Edmonton
County	ALBERTA
Province	AB
Postal Code	T5E 5R6

Amenities

Amenities	Parking-Plug-Ins
Parking	Stall

Interior

Appliances	Dishwasher-Built-In, Dryer, Refrigerator, Stove-Electric, Washer
Heating	Forced Air-1, Natural Gas
Stories	2
Has Basement	Yes
Basement	Full, Unfinished

Exterior

Exterior	Wood, Brick
Exterior Features	Fenced, Playground Nearby, Public Transportation, Schools, Shopping Nearby
Roof	Asphalt Shingles
Construction	Wood, Brick
Foundation	Concrete Perimeter

Additional Information

Date Listed	October 18th, 2025
Days on Market	34
Zoning	Zone 02
Condo Fee	\$300

DATA IS DEEMED RELIABLE BUT IS NOT GUARANTEED ACCURATE BY THE REALTORS® ASSOCIATION OF EDMONTON. COPYRIGHT 2025 BY THE REALTORS® ASSOCIATION OF EDMONTON. ALL RIGHTS RESERVED. Trademarks are owned or controlled by the Canadian Real Estate Association (CREA) and identify real estate professionals who are members of CREA (REALTOR®, REALTORS®) and/or the quality of services they provide (MLS®, Multiple Listing Service®)

Listing information last updated on November 21st, 2025 at 4:02am MST