

# \$574,000 - 4960 191 Street, Edmonton

MLS® #E4465164

## \$574,000

4 Bedroom, 3.50 Bathroom, 1,941 sqft  
Single Family on 0.00 Acres

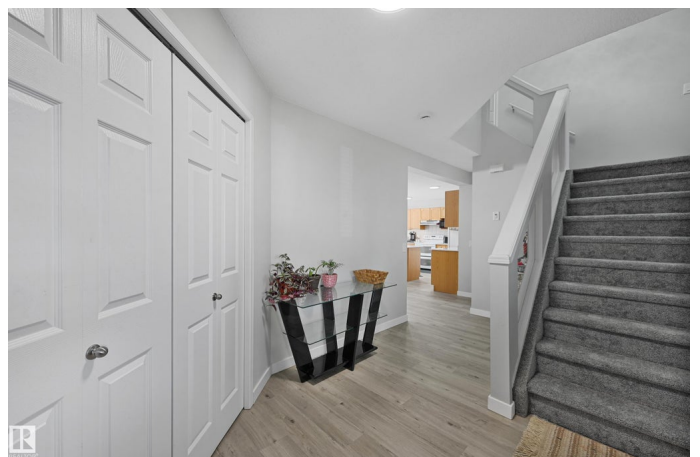
Jamieson Place, Edmonton, AB

This 4 bedroom home feels bright and welcoming from the moment you step inside. Recently updated, it features quartz counters, new vinyl plank flooring, modern lighting, and fresh paint throughout. The main floor offers open, comfortable living spaces with the kitchen at the heart of the home, perfect for cooking and entertaining. Upstairs, the spacious primary bedroom comes with its own ensuite, while two additional bedrooms provide plenty of space for family or guests. A fourth bedroom in the finished basement adds flexibility for a guest room, home office, or play area. Outside, you'll enjoy added privacy with no neighbours directly behind the home. Complete with a double attached garage and thoughtful updates throughout, this move-in ready home is full of charm and ready to be enjoyed.

Built in 2003

### Essential Information

MLS® #	E4465164
Price	\$574,000
Bedrooms	4
Bathrooms	3.50
Full Baths	3
Half Baths	1
Square Footage	1,941



Acres	0.00
Year Built	2003
Type	Single Family
Sub-Type	Detached Single Family
Style	2 Storey
Status	Active

### **Community Information**

Address	4960 191 Street
Area	Edmonton
Subdivision	Jamieson Place
City	Edmonton
County	ALBERTA
Province	AB
Postal Code	T8M 2T8

### **Amenities**

Amenities	Off Street Parking, Closet Organizers, Deck, Front Porch, Hot Water Natural Gas, Vaulted Ceiling, See Remarks
Parking	Double Garage Attached

### **Interior**

Interior Features	ensuite bathroom
Appliances	Dishwasher-Built-In, Dryer, Hood Fan, Refrigerator, Stove-Electric, Washer
Heating	Forced Air-1, Natural Gas
Fireplace	Yes
Fireplaces	Glass Door, Mantel
Stories	3
Has Basement	Yes
Basement	Full, Finished

### **Exterior**

Exterior	Wood, Vinyl
Exterior Features	Backs Onto Park/Trees, Fenced, Flat Site, Landscaped, Level Land, No Back Lane, Schools, Shopping Nearby, Treed Lot, View City, See Remarks
Roof	Asphalt Shingles
Construction	Wood, Vinyl

Foundation            Concrete Perimeter

### **Additional Information**

Date Listed            November 7th, 2025

Days on Market      13

Zoning                 Zone 20

DATA IS DEEMED RELIABLE BUT IS NOT GUARANTEED ACCURATE BY THE REALTORS® ASSOCIATION OF EDMONTON. COPYRIGHT 2025 BY THE REALTORS® ASSOCIATION OF EDMONTON. ALL RIGHTS RESERVED. Trademarks are owned or controlled by the Canadian Real Estate Association (CREA) and identify real estate professionals who are members of CREA (REALTOR®, REALTORS®) and/or the quality of services they provide (MLS®, Multiple Listing Service®)

Listing information last updated on November 20th, 2025 at 5:02pm MST